

50KHz~120GHz 16V 0.4A 50Ω 1.0-male/1.0-female

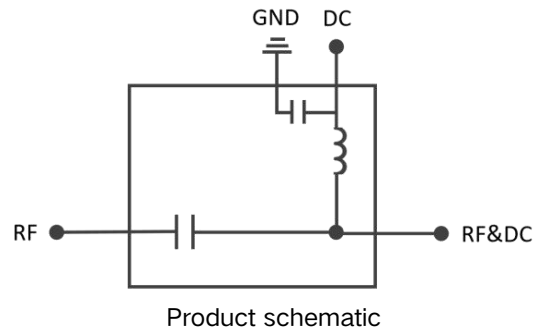
Product Features

- Frequency Range, 50KHz~120GHz
- The Voltage, 16V DC Max.
- The Current, 0.4A DC Max.
- Excellent Group Delay for All-band
- Low VSWR, 1.5:1@50KHz~120GHz Typ.
- High RF performance, ultra-competitive price
- Low Insertion loss, 3.0dB@50KHz~120GHz Max.



Product Overview

The BT120A is an ultra-broadband, low loss, and supports a maximum 32dBm RF power input coaxial bias-tee, which covers the frequency of 50KHz to 120GHz, to provide a bias power supply for amplifiers, photodiodes or optical modulators, mainly used in biasing amplifiers, laser diodes, active antennas and other applications.



Typical Applications

- Ultra-Broadband amplifier bias power supply
- Spatial Light Modulator bias power supply
- Photo-Communication & laser driver bias power supply
- Active antenna bias power supply

Configurations

- BT120A-A -RF port: 1.00mm male, RF&DC port: 1.00mm female
- BT120A-B -RF port: 1.00mm female, RF&DC port: 1.00mm male
- BT120A-C -RF port: 1.00mm male, RF&DC port: 1.00mm male
- BT120A-D -RF port: 1.00mm female, RF&DC port: 1.00mm female

There are four configurations of this bias-tee. The model BT120A-D is used as an example in this datasheet. For more information, please refer to the Physical Dimensions section. The DC-port is always SMA female.

SHEET

Specifications

Electrical Specifications:						
Item	Condition		Min.	Typ.	Max.	Units
Frequency Range	-		0.05	-	12000 0	MHz
Nominal Impedance	-		-	50	-	Ω
Insertion Loss	50KHz~120GHz		-	1.8	3.0	dB
VSWR	RF port	50KHz~120GHz	-	1.5	1.8	:1
	RF&DC port	50KHz~120GHz	-	1.5	1.8	:1
Operating RF input Power	50KHz~120GHz		-	-	32	dBm
DC Resistance	DC to RF&DC port		-	2.75	-	Ω
DC Voltage	-		-	-	16	V
DC Current	-		-	-	0.4	A

Mechanical Specifications:		
Item	Spec.	Units
RF/RF&DC Connectors	1.0-male/1.0-female	-
DC Connectors	SMA-female	-
Physical Dimensions(L*W*H)	40 * 13 * 13	mm
Net Weight	≈44	g
Material	Aluminium alloy&Copper	-
Surface Finish	Conductive oxidation&Gold-plated copper	-
Color	Aluminium color&Golden	-

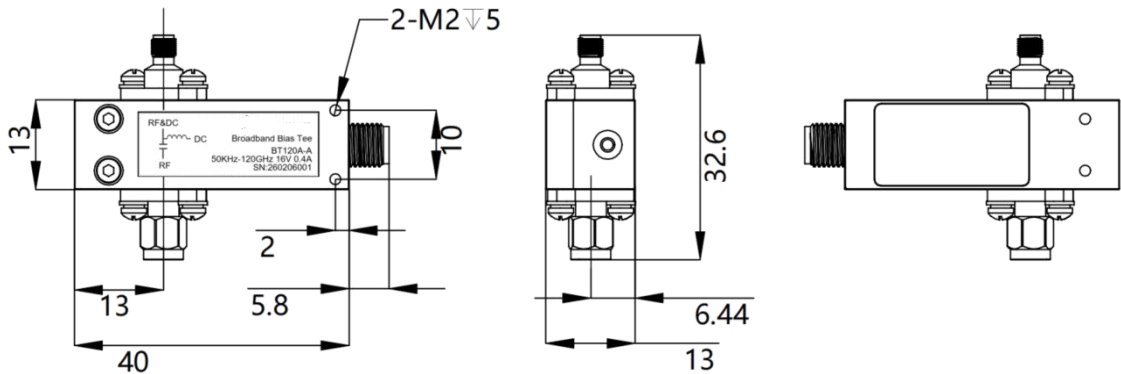
* Note: Package Dimensions & Gross Weight are subject to the actual delivery.

Other Specifications:		
Item	Spec.	Units
Operating Temperature	+10 ~ +50	°C
Storage Temperature	-45 ~ +85	°C
Humidity range	<93%@40°C	%rh

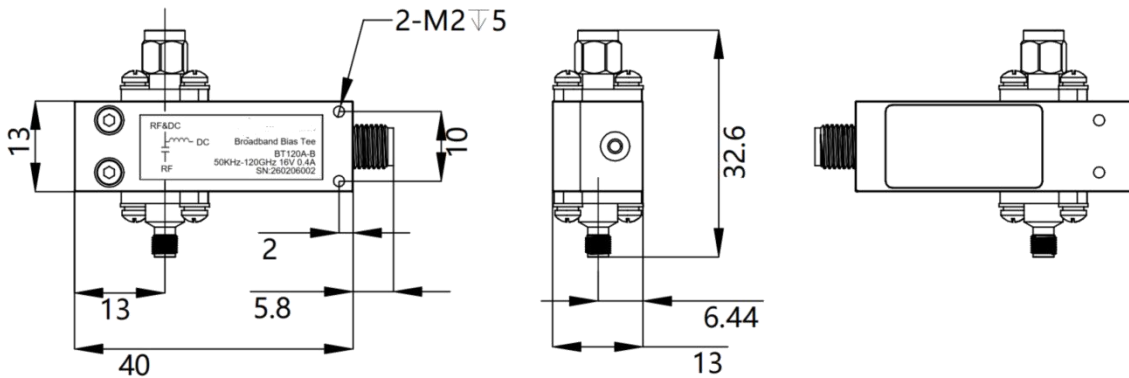
SHEET

Altitude Range	<4600	m
----------------	-------	---

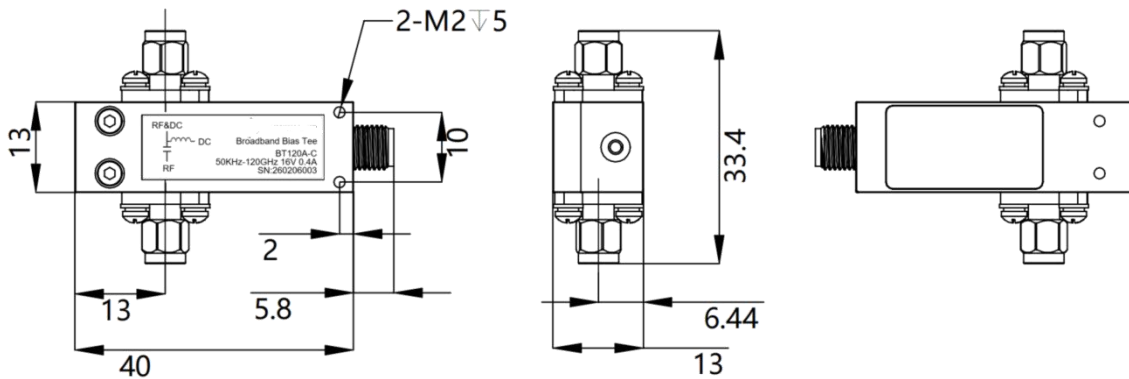
Physical Dimensions (Unit:mm)



BT120A-A

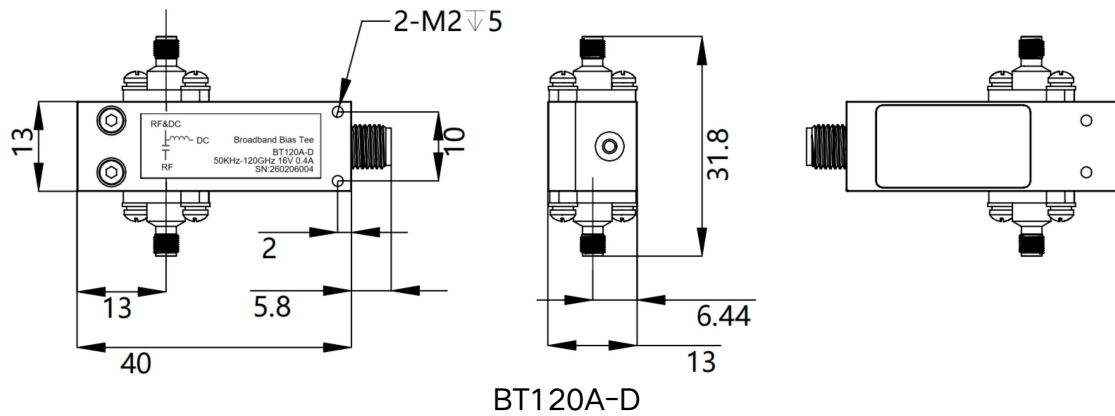


BT120A-B



BT120A-C

SHEET



BT120A-D

Interface Information

Interface definition:

NO.	Function	Description
1	RF Port	RF signal input port
2	RF&DC Port	RF signal and DC output port
3	DC Port	DC input port

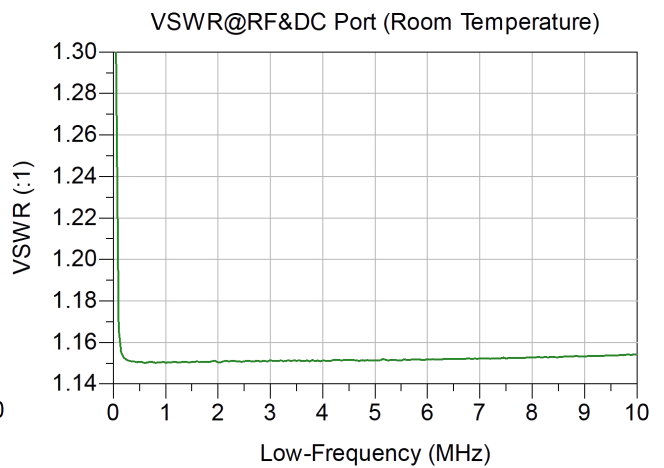
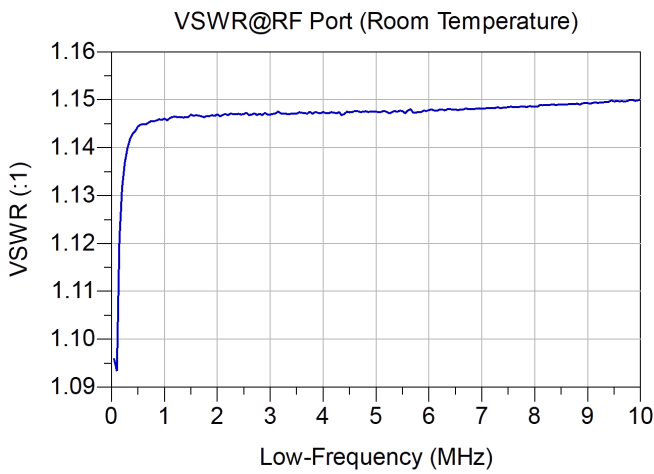
* Note: Please refer to the physical dimensions of the corresponding ports.

Typical Performance Data

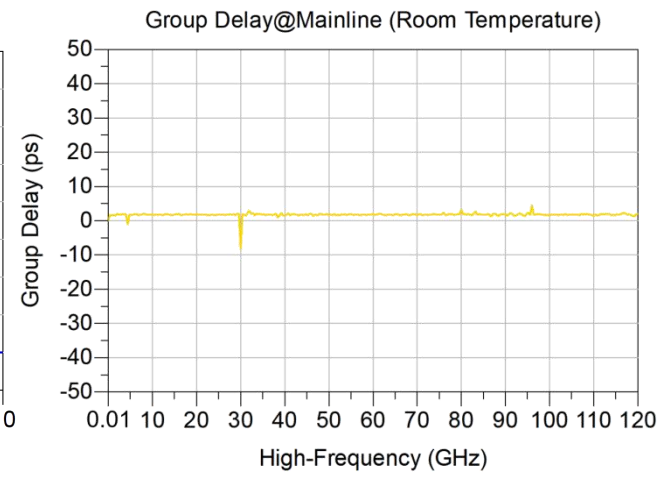
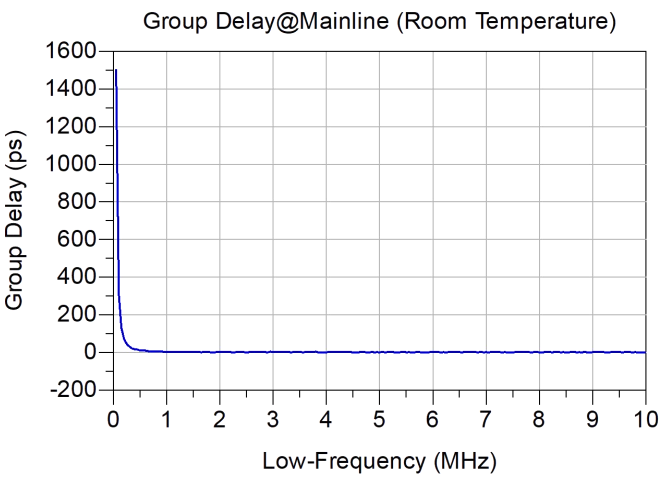
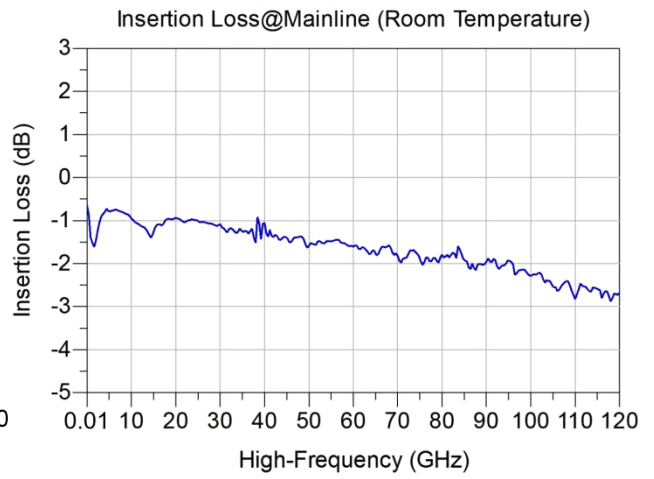
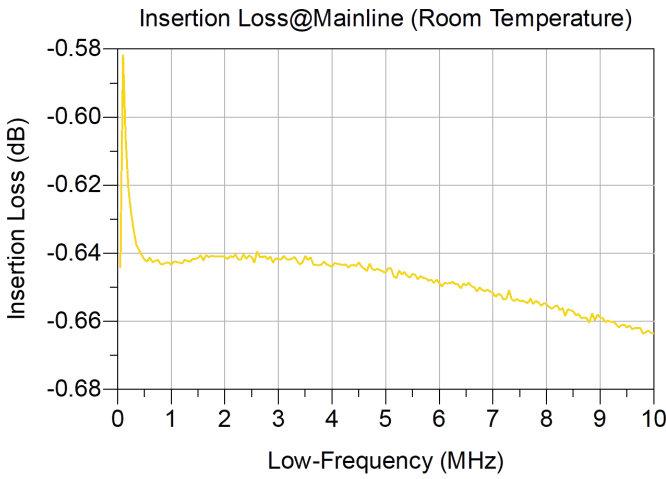
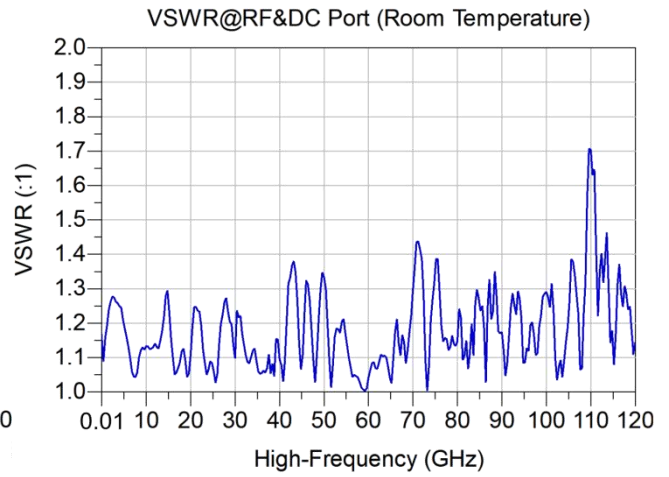
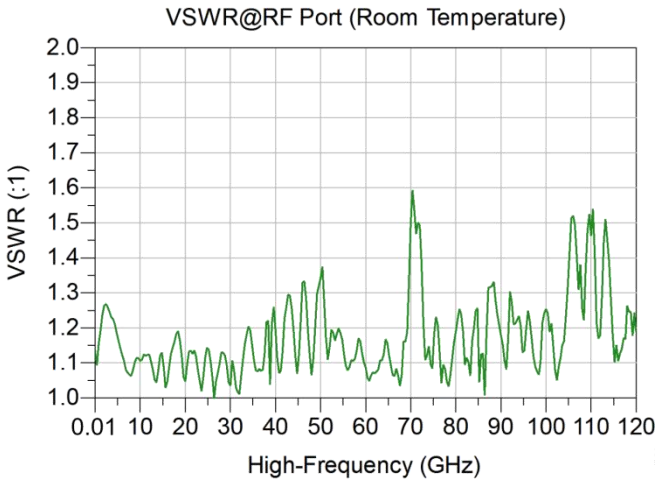
Freq.(MHz)	VSWR(:1)		Insertion Loss (dB) (with current)
	RF	RF&DC	RF to RF&DC
0.05	1.10	1.30	-0.64
0.1	1.09	1.17	-0.58
0.2	1.13	1.15	-0.62
0.5	1.14	1.15	-0.64
1	1.15	1.15	-0.64
2	1.15	1.15	-0.64
5	1.15	1.15	-0.65
10	1.15	1.15	-0.75
100	1.16	1.18	-0.83
300	1.07	1.08	-0.72
600	1.13	1.12	-1.27
900	1.15	1.16	-1.40
1000	1.17	1.16	-1.44
5000	1.17	1.21	-0.79
10000	1.11	1.13	-0.96

SHEET

15000	1.10	1.25	-1.25
20000	1.05	1.11	-0.94
25000	1.11	1.07	-1.02
30000	1.03	1.10	-1.08
35000	1.14	1.07	-1.20
40000	1.19	1.10	-1.06
45000	1.12	1.10	-1.39
50000	1.34	1.33	-1.58
55000	1.11	1.13	-1.47
60000	1.09	1.04	-1.61
65000	1.10	1.12	-1.73
70000	1.50	1.30	-1.82
75000	1.21	1.31	-1.94
80000	1.19	1.15	-1.79
85000	1.27	1.29	-1.90
90000	1.18	1.17	-1.96
95000	1.06	1.10	-1.95
100000	1.25	1.29	-2.29
105000	1.36	1.27	-2.47
110000	1.46	1.70	-2.83
105000	1.16	1.08	-2.50
120000	1.19	1.14	-2.69



SHEET



* Note: The above is typical data and is not used as an acceptance reference.